

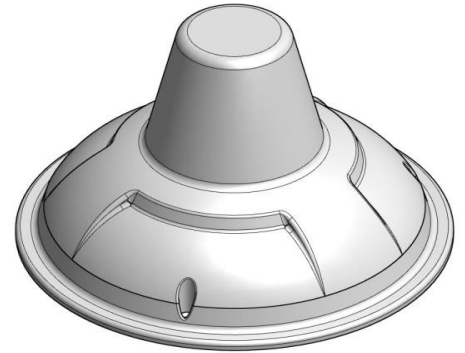
Multi-Band Omni Antenna

814 ~ 960, 1710~2690 MHz / 2 dBi


CPWW-WDT-02

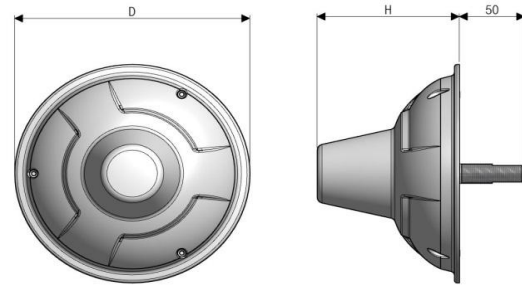
i. Electrical Specification

항 목		Omni Antenna	
Frequency Range (MHz)		814 ~ 960	1710 ~ 2690
Polarization		Vertical	
Band Width		146 MHz	980 MHz
Gain		≥ 2 dBi	≥ 2 dBi
Beam width	Horizontal	-	
	Vertical	-	-
F-B ratio		-	
VSWR		1 : 1.8	1 : 1.7
Impedance		50 Ω	
IMD (3rd)		≤ -140dBc @ 2x37dBm	
IMD (5th)		≤ -160dBc @ 2x37dBm	
Maximum input power		50 W	

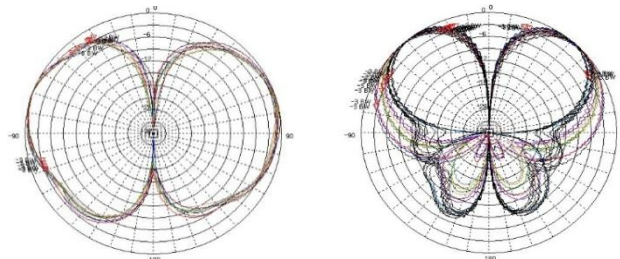


ii. Mechanical Specification

Radom Dimension (D x H)	Ø180 x 110 mm
Weight (Exclude bracket)	≤ 0.4 kg
Connector Type	N-J (Female)
Type	Open Type
Radiator Material	PCB
Radome Material	ASA
Radome Color	 Cool Gray 1C
Temperature	-40 °C ~ 70 °C
Packing Size (H x W x D)	-
Packing Weight	-



iii. Radiation Pattern



Vertical Pattern

Low Band

High Band